

SOUTHVIEW



BAND

**Student and Parent
Handbook**

2020-2021

Contacts

Emily Hage, Band Director
419-708-4979
EHage@SylvaniaSchools.org

Aaron Draime, Band Director
216-440-1053
ADraime@SylvaniaSchools.org

Maxine Clum, Color Guard Advisor
419-309-1422
Auxillary@Southviewband.com

Allison Mears, Majorette Advisor
419-265-0172
Majorette@SouthviewBand.com

Lisa Marsalek, Band Booster President
419-279-0268
SVBandBoosters@SylvaniaSchools.org

Band Office Phone: 419-824-8740 ext. 6125

Band Website: www.southviewband.com

Student Remind: Text @SVBand2021 to Phone Number 81010

Parent Remind: Text @SVBPar2021 to Phone Number 81010

Facebook Page: <https://www.facebook.com/SylvaniaSouthviewBand/>

Instagram: @SylvaniaSouthviewBand

Twitter: @Southview_Band

Instagram: @SylvaniaSouthviewBand

TABLE OF CONTENTS

Adjudicated Events, 15	Concert Ensembles, 13	Pep Band, 14
Attendance Policies, 9	Contacts, 2	Performing Ensembles, 10
Auditions, 13	District Band AE, 15	Practice Rooms, 8
Auxiliary, 11	Drumline Sectionals, 11	School Bus Transportation, 17
Awards, 22	Educational Philosophy, 3	Solo and Ensemble AE, 15
Band Camp, 11	Equipment and Space, 8	Small Ensembles, 14
Band Fee, 14	Football & Cheerleaders, 10	Step-Up Instrument Info, 5
Band Leadership, 18	Grading, 7	Symphonic Band, 13
Booster Information, 17	Honors Credit, 8	Sylvania School Policies, 4
Challenges, 13	Jazz Band, 14	Uniforms, 15
Class Supplies, 5	Leadership, 17	Varsity Letter Requirements, 22
Communication, 4	Marching Band, 10	Wind Ensemble, 13
Concert Band, 13	Marching Band Uniform, 15	
Concert Season Uniforms, 17	Marching Band Violations, 12	

SOUTHVIEW BAND EDUCATIONAL PHILOSOPHY

The philosophy of the Southview Band Program is to provide its members with a student-centered experience that reflects the core values of the Sylvania School District. Participation in music provides students the opportunity to develop a wide variety of skills through diverse learning experiences.

The Sylvania Southview High School Band strives to accomplish the following goals for our students:

- Nurture an enjoyment and understanding of music through opportunities for creativity and expression
- Develop individual appreciation and interest in music to encourage lifelong enjoyment
- Expand knowledge and awareness of a variety of musical genres
- Cultivate a plethora of leadership skills to implement both in and outside of the band classroom
- Understand and cooperatively engage in life skills such as team work, flexibility, responsibility, respect, kindness and trustworthiness

SYLVANIA SCHOOL POLICIES

All Southview High School and Sylvania School policies will be strictly enforced. This includes the Student Code of Conduct, alcohol and drug policy, school dress code, attendance, grading and discipline, activities and club policy 2430, Extracurricular Activity Code of Conduct policy 5500.01, Cell Phone/Technology Policy 5136, Student Hazing Policy 5516, Anti-Harassment Policy 5517, and Harassment/Intimidation/Bullying Policy 5517.01 which are all published in the Southview High School Handbook. Go to the [Southview High School Student Handbook](#).

COMMUNICATION

Google Classroom

Band members: Please add yourself to the Google Classroom you will be participating in! Parents: you can join the classroom as well!

Marching Band: kwzs7rd

Concert Band: 5hvlp3s

Symphonic Band: 23c5bu6

Wind Ensemble: kbnfaej

Website: www.southviewband.com

Newsletters will be emailed to parent and student email addresses. These newsletters will include upcoming events, important information, etc.

Social Media

Facebook Page: <https://www.facebook.com/SylvaniaSouthviewBand/>

Instagram: @SylvaniaSouthviewBand

Twitter: @Southview_Band

REMIND: Free Text Message service used to contact students & families.

Student Remind: Text @SVBand2021 to Phone Number 81010

Parent Remind: Text @SVBPar2021 to Phone Number 81010

Social Media Disclaimer: AS AN INTERNET USER, you must maintain and protect the confidentiality of band information and observe the right to privacy of Band Members, Directors, Staff, and Volunteers. Personal information provided to the Internet must not bring disrespect, contempt or ridicule to the band, Southview High School, or Sylvania. Regardless of your privacy settings, inappropriate postings to Facebook, Instagram, Twitter, or any other Internet, personal or social networking site include, but are not limited to: • confidential band information • inappropriate photos • slander, defamation, or any language which brings embarrassment to the band, Southview High School, or Sylvania Schools.

CLASS SUPPLIES

All Students must have:

- An Instrument (in good, working condition)
- Paper Printout / Copies of music (posted on google classroom)
- 3-ring binder
- Plastic sheet protectors
- A Pencil
- Tennis Shoes (during marching band season)
- Flip folder (during marching band season)
- Lyre
- Coordinate Sheets (during marching band season)

Instrument specific supplies:

Flute: Cleaning rod and swab

Oboe / Bassoon: 3 or more working reeds, cork grease and a swab

Clarinet / Saxophone: 3 or more working reeds (Vandoren Blue box size 3), cork grease and a swab

All Brass: Valve Oil, Slide grease, polish cloth

Percussion:

Concert Band Season

- A small mallet / stick bag (Ex. Innovative Percussion SB3 Fundamental Series)
- Innovative Percussion: IP-JC – James Campbell model
- Innovative Percussion Medium Hard Rubber Mallets- F8
- Innovative Percussion Medium Yarn Mallets
- Innovative Percussion Timpani Mallets - CT3

Marching Band Season

- Snare Drum: 2 pair of Innovative Percussion - FSBK2 Velocity (student purchase)
- Tenor Drum: 2 pair of Innovative Percussion AT1 (student purchase)
- Bass Drum: Mallets provided, students have to sign out and assume financial responsibility if lost or damaged
- Cymbals: Cymbal gloves (assessed with uniform fees)

Step-Up Instrument Recommendations

For several years now, your child has worked to perfect their skills on their musical instrument. As your student begins high school, you should consider purchasing a step-up instrument for them to use during concert band season.

There are several reasons to think about a new instrument:

- (1) Marching band is hard on instruments. The daily use in the elements can cause an instrument to show signs of wear much faster than when it is just used in concert band.
- (2) Many beginning level instruments inhibit the student's ability to produce a more mature sound since student line instruments are generally slightly smaller in construction than intermediate or advanced models. Most of the instruments your child started on are considered beginning level instruments. These are generally smaller in bore size (the inside diameter of the tubing) and made of cheaper materials. Step-up instruments are larger in bore and feature additional keys or valves which permit easier playing in the high ranges often found in high school level band music. Advanced level instruments feature hand-made or near hand-made construction. Many intermediate instruments are very similar to advanced or professional models but have only minor cosmetic and/or structural differences. If a child thinks he/she would like to continue music in college, an advanced instrument would be suggested.

Please feel free to speak to the directors before you make a new instrument purchase. We are always willing to inspect and play test any instrument before you purchase it. You may contact our local music store - Rettig Music, or an excellent mail order company is "Woodwind Brasswind" (1-800-346- 4448) or on the web at www.wwbw.com)

Here are some basic recommendations for step-up instruments (intermediate and advanced). Feel free to discuss brands with a director or private instructor.

- FLUTE: An open hole flute with a silver headpiece is the best for intonation. A "B" foot joint is also advisable on both levels of instruments. Intermediate instruments generally have sterling silver headpieces while advanced instruments have sterling silver headpiece and body. All instruments listed here are open hole in construction.

Recommendations: Yamaha, Gemeinhardt, Armstrong brands

- OBOE: Students may use school owned oboes, but if you are interested in purchasing one, our suggestion is the: Intermediate & Advanced: Fox Renard Artist Model 330
- CLARINET: Intermediate & Advanced clarinets are made of Grenadilla wood and have a fuller and more resonant sound than beginning level instruments allowing them to play better in tune.

Recommendations: Buffet R13, Buffet E11

Don't want to invest in a whole new instrument?

Mouthpiece Recommendations: Vandoren M13lyre or M 15

Ligature Recommendations: Vandoren Optimum, Rovner Versa X, BG Super Revelation

- ALTO SAX: These instruments offer improved keywork for better intonation and tone. A high F# key is generally included. Students could also make considerable progress on an intermediate ligature and mouthpiece.

Recommendations: Selmer SA S280 Voix II, Yamaha YA S-480 Intermediate

Mouthpiece Recommendations: Vandoren Optimum, Selmer Paris S80 Series

Ligature Recommendations: Vandoren Optimum, Rovner Versa

- TENOR SAX: These instruments offer improved keywork for better intonation and tone. A high F# key is included. Students could also make considerable progress on an intermediate ligature and mouthpiece.

Mouthpiece Recommendations: Vandoren V16 Hard Rubber, Selmer Paris S80

Ligature Recommendations: Rovner Versa, BG L13 Standard

- TRUMPET: A silver plated instrument with a medium-large bore provides a better foundation for tone production. All of these instruments offer both a third valve slide ring and first valve slide saddle for assistance in tuning.

Recommendations: Bach Stradivarius, Bach 180-43 Stradivarius

Mouthpiece Recommendations: Bach 3C

- FRENCH HORN: Students may use a school owned F. Horn, but if you are interested in purchasing one, here is our recommendation.

Recommendations: Conn 8D, Holton 179 Series, Yamaha YHR-671 Series

- TROMBONE: These trombones feature larger bores than beginning instruments allowing students to produce a darker, warmer sound. They also include a "F" trigger attachment which is extremely helpful in navigating the faster moving HS music

Recommendations: Bach 42BO Stradivarius Series F-Attachment, Getzen 3047AF Custom Series F-Attachment

Mouthpiece Recommendations: Bach 6 ½ AL – small or large bore depending on your instrument

- EUPHONIUM: A baritone has 3 valves, where a euphonium has 4. This allows for alternative fingers to help with pitch accuracy as well as having a larger bore for a warmer tone quality

Recommendations: Yamaha YEP-321 Series 4-valve, King 2280 Series

Mouthpiece Recommendations: Bach 6 ½ AL – small or large bore depending on your instrument

- **PERCUSSION:** Percussionists can start to add more mallets or method books to their collection. Innovative Percussion Brand is highly recommended.

GRADING

Band is a full-year class that earns students 1 credit toward graduation. Therefore, **every** band activity in which a student participates, both inside and outside the classroom, is taken into consideration in the grading process.

- 1) Attendance and Participation: Each student is important to everyone else in the ensemble and affects the total success of the band – no one “sits the bench” in band! Therefore, each student’s attendance at rehearsals and concerts as well as focused rehearsal participation is required. A member will lose points for coming to rehearsal unprepared (missing instrument, music, supplies), being late for a report time, or partaking in any activities that are not beneficial to the rehearsal process (chewing gum, disruptive behavior, etc).
- 2) Musicianship: Students will be evaluated by individual performance assessments throughout the year. Consideration is given to each student’s level of experience playing his/her instrument. Assessments include, but not limited to, chair placements, band placements, periodic playing tests, marching band music checks, independent performance projects, and some written evaluation.

Marching Band Music Memorization: All members of the band are required to memorize all pregame and halftime music/routines. Memorization will be assessed by the directors and communicated to students individually through the messaging options in Google Classroom. Music memorization check dates will be posted on the band website at the beginning of the marching season.

Music checks are graded on a complete or incomplete scale. If a student does not pass a music check, they will be assigned a section of the music to make up in order to receive full credit. Students are permitted to make up that music check with a director or submitted via video. Students may complete the music check with the printed music for partial credit. Students will be provided a “last call” memorization date to complete any outstanding music checks. Failure to pass off music checks may result in prevention from participating in that particular drill/performance, additional scheduled practice time with the director to assist in music memorization technique, etc.

- 3) Performance Attendance: All performances are mandatory. The opportunity to perform for a public audience is an integral part of the curriculum that cannot be taught, provided, or experienced during the school days. Performance dates are all given in an appropriate amount of time to prepare schedules accordingly (See Google Calendar on www.southviewband.com). Please read the attendance policy carefully! 3rd Quarter Only: All band members are required to attend 4 Winter Pep Band Performances.
- 4) Musicianship and Personal Development: Completing all the tasks above will earn you a B+ (89%) in band. This means daily class participation, scale tests, and performances are very important. In order to earn an A (90-100%), students should to complete one item on the list below per quarter. Participating in the activities listed below support your development as a musician and person, and in turn evolve the band program.

Musicianship and Personal Development Activity Recommendations:

1. Take private lessons (Must take at least 5 lessons per quarter and submit a [private lesson form](#))
2. Participate in a community band or orchestra on your primary band instrument. Proof will be required.
3. Audition for an Honor Band Ensemble (acceptance not required, but sometimes the auditions are during a different grading period than the actual Performance of an honor ensemble).
4. Be accepted and participate in an Honor Band by audition or recommendation.
5. Perform a solo or ensemble at Solo and Ensemble Adjudicated Event on your band instrument.
6. Send in an audition recording for the All-State Band or Orchestra. (4th quarter only)
7. Audition for the Toledo Symphony Youth Orchestra on your primary band instrument.
8. Be accepted to the All-State Band or Orchestra.
9. Participate in Tri-M (volunteer music organization run by Miss Fitzpatrick)
10. Give lessons to a junior high student (bi-weekly at minimum)
11. Participate in community music outreach (Ex. perform at a senior center or community event)
12. Enroll in the Band Honors Credit Course (see below)

Do you think there is an activity that qualifies for Musicianship and Personal Development credit? Ask a director for approval prior to participating!!

HONORS CREDIT

Members of the Wind Ensemble and Symphonic Band have the opportunity to schedule band for honors credit. The Honors Option in band will focus on the development and application of critical thinking skills - analysis, synthesis, evaluation, and problem solving. Students must demonstrate an appreciation of the aesthetics and an understanding of the creative process in music. Student responsibility, intrinsic motivation, independent study, and research will be emphasized. Students enrolled in Band for honors credit are graded upon a 4.5 grading scale for 1 credit. There are additional requirements for this course requiring additional permission of both director and parents before enrolling in this course. A specific course outline, handbook, syllabus, rubric, contract for Band-Honors is available at www.southviewband.com or from the directors the first week of school. Deadline to enroll in honors for the 2020-2021 school year is Friday, August 28.

EQUIPMENT AND SPACE USAGE

- **Band Room:** The band room not only serves as classroom and rehearsal space but also houses all of the equipment needed for the day to day functions of the Southview Band. This equipment, including chairs and music stands, are to be treated with respect and used only for their intended purposes. When not in use, instruments, (both school owned and student owned) are to be stored properly in the appropriate cases and in the proper storage space. All uniform parts are to be stored in the appropriate closets. Dinkles and marching band gloves DO NOT live in the band room. **NO FOOD OR DRINK** will be permitted in the band room at any time.
- **Band Lockers:** All instruments, books, and personal items are to be stored in assigned lockers. Large Percussion Equipment must be covered and staged in assigned area. Combination locks are permitted on the lockers but only if the combination is provided to the band directors.
- **Practice Rooms:** If a band member wishes to use one of the practice rooms (**FOR PRACTICING**) during a study hall/lunch or during a commons period, a signed pass must be obtained from one of the

Directors and given to the Study Hall/Commons teacher. Practice rooms are for practicing a musical instrument or voice. They are not intended to be used as a replacement for Study Hall or Commons, including the use of the computers. **NO FOOD OR DRINK** will be permitted in the practice rooms or music hallway at any time.

- **School Owned Instruments (including percussion):** Parents and students using instruments owned by the school will be required to sign a Band Instrument Loan Agreement. The agreement assigns responsibility for the care and maintenance of that instrument and its accessories to the student. In the event the instrument is lost or damaged, the student will be responsible for its replacement or repair. This form can be downloaded from the [band website](#).

ATTENDANCE POLICY

Each band member has a responsibility to the ensemble. Individual attendance at rehearsals and performances are important to **everyone** in the group and affect the **total** success of the band. Attendance at rehearsals and performances accounts for 70% of the band grade each grading period. Students and parents need to be aware of the band’s calendar and demonstrate good time management. When a conflict arises, it is the student and parent responsibility to complete [absence request form](#) and submit to a director 2 weeks prior of the known absence. In an emergency, the parent must call the band office or email a director, then follow up with an absence form. Please note, **2 or more** performance absences (excused or unexcused) during a grading period will result in the lowering of the quarter grade. If the Directors determine that an individual student is not prepared enough to perform at a specific event (due to previous illness, missed rehearsals, etc.) the student is still required to attend the event (football game, concert, parade, etc.) with the band and be in full uniform unless personally excused by the Directors.

	Summer Marching Band Rehearsals/Sectionals	During School Rehearsal Attendance	After School Sectionals & Rehearsal Attendance
Rehearsal	+ Graded through 1 st quarter attendance + Pre-Camp, Post-Camp, Percussion Sectionals	+ Graded through each quarter attendance + Daily grade	+ Drumline Sectionals + Symphonic Band and Concert Band Sectionals that were scheduled by a Director + Majorette and Flag practices
Excused Absences	+ Previously scheduled obligations that have been communicated to the director at least 2 weeks prior to event.	+ Excused from school = excused from rehearsal	+ Excused from school same day = excused from sectional + Completed and approved Absence Form
Unexcused Absence	+ Student Employment + Absences not previously communicated using the absence form	+ Skipping class + Unexcused absences from school	+ Student Employment + Any absence not approved by a director or not communicated in advance.

Performance Specific Absences	Unexcused Absence
+ Being excused from a scheduled performance is rare + An Absence Form must be turned into a director within the 2 week timeline . At which point it is the director’s discretion whether the absence will be considered excused. NOTE: Religious holidays will be	+ Work: band is a graded course and students will not be excused from a performance. + Not submitting an absence form prior to the 2 week timeline

considered excused, but must be communicated through the absence form. + A death in the family, a family emergency, or the band member is ill	
--	--

Student Employment: Students are encouraged to clearly communicate their school expectations and schedule to their employer in advance to avoid conflicts. If an employer would like further explanation of band requirements, the Directors can supply the student with a formal letter.

PERFORMING ENSEMBLES

Band is a co-curricular activity, which means band is a regularly scheduled class for graduation credit that has outside of school requirements. Your individual commitment and dedication to band directly affects the success of this team-oriented effort.

All 2020-2021 required performances, outside of school rehearsals, and extra events are posted on the band calendar at www.southviewband.com.

Required performing ensembles include marching band (includes auxiliary), concert band and pep band. Additionally, students are required to march in the Sylvania Fall Festival Parade, Sylvania Memorial Day Parade and any weekend performances communicated in advance through the Southview Band Calendar.

Additional Performance Opportunities: Jazz Band, Solo & Ensemble Adjudicated Event, Community Pep Band Performances (Walk of Light, Race for the Cure, etc.), Honor Bands (OMEA, University, etc.)

Exam Expectations:

- First Semester Exam Requirements: Each band reports during scheduled exam time for a rehearsal.
- Second Semester Exam Requirements: Participation in the Sylvania Memorial Day Parade. There are NO exemptions for this performance. For Auxiliary Members, the quarter 1 grade will be retroactively changed by 2 letter grades if this event is missed.

MARCHING BAND

The SV Marching Band performs at **all Southview varsity football** games during the regular season and any post season games. The band provides entertainment for all home pre-game and all home and away halftime shows, as well as supplies spirit and support for the Southview fans and football team. In addition, Southview Marching Band performs for a number of parades (including the Sylvania Fall Festival Parade and the Sylvania Memorial Day Parade), fall pep assemblies, Marching Band Concert, and a limited number of festivals and community-sponsored events throughout the school year.

- Pre-Camp and Squad Leader Training Rehearsals: Marching Band Pre-Camp rehearsals & Squad Leader Training take place the week prior to Band Camp. **Attendance for all squad leaders and 1st year marchers is mandatory for all pre-camp events.**

- Band Camp: The goal of Band Camp is to learn marching and playing fundamentals, begin drill for the season, play and memorize music, and most of all get to know each other and grow into a working unit. **Attendance at Band Camp is required for all members of the Southview Marching Band – there are NO EXCEPTIONS to this policy.**

July 27	4pm - 8pm	Leadership Training
July 28	5pm - 8pm	Pre-Camp (New marchers & leadership only)
July 29	5pm - 8pm	Pre-Camp (New marchers & leadership only)
July 30	5pm - 8pm	Pre-Camp (All students)
July 31	5pm - 8pm	Pre-Camp (All students)
August 3 – August 7	8am - 3pm	Band Camp (All students)
August 10 – August 13	9am – 12pm	Post-Camp (All students)
August 13	6pm	Stadium Performance (All students)
	7pm	Informational Booster Meeting (All families)
	7:30pm	Mandatory Florida Meeting (All students traveling)
August 14	NO CAMP	
August 17	9am – 12pm	Post-Camp (All Students)

- School Day Marching Band Rehearsals are held during periods 6 and 7. Weather permitting, these rehearsals take place outside and all band members should dress appropriately. This is a physical activity that requires appropriate footwear, loose shoes/sandals/bare feet will not be permitted. On rare occasions when bad weather or other uncontrollable circumstances prevent the band from adequately rehearsing during school, an evening rehearsal may be arranged by the Directors (at least 2 days' notice will be given).
- Drumline Sectionals: The SV Drumline serves many functions for the marching band and requires additional rehearsal time. Sectionals are posted on the SV Band Calendar and are run by a qualified percussion specialist. The drumline advisor serves as an additional band staff member. All students are to be respectful, participate in a productive way and be attentive during all rehearsals, just as a student would be during a full band rehearsal. Failure to comply with these guidelines can result in a student experiencing a marching band violation. Attendance at sectionals is required and are calculated into the quarter band grade for every member of the drumline. All drumline participants are responsible to load their instrument on the trailer for all away events.
- Fall JV & Varsity Football and Cheerleaders: Band members who dress for varsity football and cheerleading are exempt from marching with the band at the football games. However, are still asked to perform with the band during halftime. After they are done performing, they will return to the locker room to be with the football team. During regular daily class time, non-performing members **are required** to learn all music, complete music checks, rehearse with the band at all indoor music rehearsals and assist with the handling of any equipment needed for the outdoor marching rehearsals. They are also **required** to participate with the band at any other performance or fundraising activities during the fall season that do not occur during the sporting event performances (all parades, Tag Day, Marching Band Concert, etc.).
- Auxiliary: consists of the majorette squad and color guard. The function of the Auxiliary is to provide additional movement, color, and showmanship to the band. The Auxiliary participates in all performances of the Southview Marching Band (football games, parades, concerts, etc.) and serve as ushers for band performances for the remainder of the school year. Additional performances of the Auxiliary will also be scheduled throughout the school year by the Directors or Coaches.

- Auxiliary practices will be held during band periods and scheduled after-school times posted on band calendar. All scheduled practices are required and attendance will be taken, per the attendance policy. Each member of the Auxiliary will be evaluated for individual performance of routines during the football season, including any play-off games. Based on these evaluations, squad members can be “benched” from performing if they do not know the routines adequately. In the unlikely event this occurs, the auxiliary member not performing is still required to dress in uniform and attend the event.
- Football Games: The Marching Band’s presence at these events is great exposure of our program to the community. Every member of the band will be visible from the moment we block up to the moment we return to the band room. This requires all members to represent Southview marching band with respect, kindness and pride. Below are the expectations of every member while they are in uniform.
 - While in the stands, sit with your section.
 - Only play your instrument when we are playing together as an ensemble.
 - All instruments except sousaphones and percussion are to be held, do not lay them down!
 - After the half-time show, the band will be dismissed for a third quarter break. This is a privilege and can be removed for poor behavior and/or policy violations. All band members must return to their seats and be ready to play when there is ONE minute on the 3rd quarter play clock.
 - Each week, a group of squads are responsible for cleaning the band room following marching band performances.
 - **Raincoats:** In the event the raincoats are used, they will be issued before leaving the band room, and upon returning, everyone will put their raincoat where instructed by directors.
- Marching Band “Violations”: In order for the marching band to run smoothly, students must understand and follow the policies in place. This is for our safety and easy facility when transporting a large number of students. Any infraction of the band policies is a “violation”.

The following are examples of infraction and can result in a “Violation”:

1. Inappropriate behavior
2. Disrespect of the uniform
3. Disrespect to other members of the band
4. Not complying to directors, band advisor staff or adult chaperones
5. Use of profanity.
6. Tardy for rehearsal / performance report time.
7. Found out of uniform during game time.
8. Late returning after the third quarter.
9. Not passing uniform inspection.

Violations:

1. Time removed from third quarter privilege for one game.
2. Removal of the entire third quarter privilege for one game.
3. Same as above for one more game.
4. Lowering of participation grade and parent contact.
5. Removal of the student from marching at one game, thus lowering the student’s score.
6. Removal from band.

Based on the severity of the infraction, violation steps may be skipped at the discretion of the director.

CONCERT BAND

Following the fall Marching Band season, the band's "concert season" begins. Performances of the Concert Season Bands include: holiday, winter, and spring concerts, the Spring Music Festival (when held), and the Ohio Music Education Association (hereafter referred to as OMEA) District Adjudicated Event and the District Solo and Ensemble Adjudicated Event. A number of school and community-related performances are also scheduled throughout the concert season.

Wind Ensemble

Wind Ensemble consists of our strongest and most independent musicians. The curriculum emphasizes advanced techniques of performance and application to concert literature. This ensemble performs music of the most advanced quality and difficulty equal to the O.M.E.A. classification of "A or AA" band literature. Private lessons are STRONGLY encouraged for participation.

Symphonic Band

Symphonic Band consists of mostly upperclassmen and experienced players. The curriculum emphasizes developing more advanced techniques of performance and application to concert literature. This ensemble performs music of a more advanced quality and difficulty equal to the O.M.E.A. classification of "A or B" band literature. Private lessons are STRONGLY encouraged for participation.

Concert Band

Concert Band consists of mostly underclassmen players. The curriculum emphasizes basic/intermediate fundamentals of band performance to develop individual musician skills and application of skills to concert literature. Concert band performs music consistent with the experience and skill level of the members, usually equal to the O.M.E.A. classification of "C or D" band literature.

Auditions and Ensemble Placement takes places during scheduling time of the previous school year, using google classroom. Auditions consist of provided music excerpts and scales/rudiments. Auditions are video recorded, submitted through Google Classroom and evaluated by the Directors. This audition also serves as a musical assessment for each student.

Section Leaders are the first chair players in every section. This position will be determined by playing ability, experience and leadership qualities. These people are responsible for assisting the Directors with the preparation of music within their sections, and should be able to assist any member of their section having difficulty.

Challenges: If at any time during the concert season, a member is dissatisfied with his/her position within the section, a challenge can be made. Material for any challenge will be current material in the band folder selected by the director, scales and sight-reading. Challenge forms must be filled out and challenge completed no less than 2 weeks prior to the performance. Based on the timing of the challenge, a seating change may occur but the student's part may remain the same.

PEP BAND

The Southview pep band performs at 10 winter sporting events (boys and girls basketball games). **All** band members are required to perform at **four** pep band events. Not doing so directly affect the student's third quarter performance attendance grade. Perfect attendance at **all** pep band performances is required to earn a point toward a band letter (see "Awards"). This group will be admitted free to events at which it is to perform. **Only approved members** (those who perform and are wearing the pep band uniform) will be admitted to the event. Members are to wear the official orange Southview Band t-shirt.

JAZZ BAND

Prerequisite: **Enrollment in Band or Orchestra, unless otherwise approved by director**

The Jazz Band is a musical group organized to study and perform the various styles of jazz music, such as Big Band Dance Music, Pop and Rock, Ballads, and the Blues. A basic understanding of improvisational techniques is also emphasized. The Jazz Band is a full-year class that meets after school and earns students a 1/4 credit. Grading for Jazz Band follows the same rubric as other performing ensembles. The Jazz Band performs at a number of community and school-sponsored events, assemblies, and participation in the annual Northview Jazz Festival held each year. Being a member of one of the Jazz Bands earns members a point toward a band letter.

The class meets after school Monday and Wednesday from 2:30-3:30pm in the band room.

SMALL ENSEMBLES

Throughout the school year, the band department is often requested to have a small group provide music for a number of community and school-sponsored events. For each of these, a separate small ensemble is selected. Members are selected on a need per performance basis, and all members earn 1/3 of a band letter point for each performance except for any performance at school during the school day. It is encouraged to consider this participation at the start of the school year to preparation for these events as well as Solo and Ensemble Adjudicated Event.

BAND FEE

Each student is assessed a one-time per year band fee. This fee helps support all uniform maintenance (Cleaning, repairs, replacement, etc.), supply miscellaneous uniform parts (hats, clasps, buttons, etc.), as well as support the band students through supplemental instruction, equipment for student use, OMEA entry fees, administrative requirements, and awards.

Auxiliary (not participating in concert band season): \$50/student

Percussionists: \$125/student (includes 2 pairs of sticks/mallets/cymbal gloves)

Wind Players: \$100/student

Cash, check or credit card is accepted. Checks may be made payable to "Southview Band Boosters"

OMEA ADJUDICATED EVENTS

Solo and Ensemble Adjudicated Event:

All students are encouraged to participate in the annual Solo and Ensemble Adjudicated Event. This OMEA event is usually held in January or February. The purpose of this event is to promote and encourage students to improve basic musicianship through solo and small ensemble performances. Soloists pay their accompanist a fee for their practice and performances. Permission slips, fee costs, and additional information will be sent home prior to the Holiday Break.

District Large Group Band Adjudicated Event:

Large Group Adjudicated Event takes place each year in March. This event provides our students with comments for improvement by four qualified adjudicators. Additionally, the ensemble is given a rating, similarly to Solo-Ensemble event. Students also have the opportunity to hear bands in other classes and from other schools. When this event is held at Southview, all band members and their parents, including auxiliary, will be required to work at the event. This event is a great undertaking but cannot happen without the help of all of our band students and their families! Please keep the dates open on your calendar.

UNIFORMS

The band uniform represents Southview High School, Sylvania Schools, and every member of the ensemble. Southview Band follows an "all or nothing" uniform policy. Meaning, it is expected that **all uniforms be worn properly and, in their entirety, at all times**. The uniforms should never be worn in partiality unless so stated by a Director due to temperature, etc. When Uniforms are not in use, they are to be properly hung on assigned hanger and placed in the uniform cabinets, along with your hat. Students are to inform the uniform parent if any mending or cleaning is required.

Marching Band Uniform:

- + Band Shako (hat) (orange beret for Sousaphones, \$55)
- + Band coat
- + Band pants
- + Black Dinkles (marching shoes) (\$35)
- + Long black dress socks
- + White gloves (\$3) (Cymbal players - black Seavine gloves \$20)
- + Orange band shirt (\$10)

1. The shako, coat, and pants are loaned to you. You must purchase the shoes, socks, gloves, and the orange band T-shirt.
2. The required, black "Dinkles" marching shoe are ordered in bulk after uniform fittings in late July, early August. Each member is required to purchase his or her own pair of Dinkles. These are very good quality shoes made specifically for marching bands and, with proper care, should last for four years.
3. A new pair of white gloves will be issued to each member every fall. Additional white gloves may be purchased from the Band Boosters. Cost: \$3/pair.
4. Only natural hair color or permanent hair color will be permitted. **Temporary/spray-on hair color will not be allowed because they can stain the uniforms and/or raincoats.**
5. The only pant garments allowed under the uniform must stop at the ankle. Examples include: thermal underwear, athletic shorts and under armor. **No JEANS, heavy sweatpants, or flannel pajama-type pants are to be worn under marching uniforms.**

Alternate Marching Band Uniform:

An alternate warm weather uniform consists of band pants, Dinkles marching shoes, long black socks, and grey band polo (\$20). Directors will determine in advance the uniform to be worn at an event and will communicate through the Google calendar.

An alternate uniform consisting of the Southview Band orange t-shirt, blue jeans, long black socks, and Dinkles marching shoes may also be coupled with the Southview Band raincoats in cases of inclement weather. The Band T-shirt and jeans uniform is also used for Pep Band performances.

Marching Band Uniform Standards:

Replacement cost for full uniform and raincoat is \$550.

- **Shako** - long hair **must** be tucked inside the hat
- **Coat and pants** - no undergarments visible; pant length touching the top of the shoe (should be adjusted by suspenders)
- **Gloves** - clean and white (Flute / Clarinet will need to cut off the finger tips)
- **Socks** – LONG black socks that do not have additional markings on them.
- **Squad Leader Chords**
 - Solid Orange = Squad Leader (right shoulder)
 - Orange / White = Senior (left shoulder)
 - White = field commander
 - Gold = Band President (left shoulder)
 - Silver = Band VP or Secretary (left shoulder)
 - Brown = Class representatives
- **Shoes** - clean and polished
- **Instrument** - clean to sight, good working condition

Auxiliary Uniforms

Guideline #4 above regarding hair coloring pertains to Field Commanders and Auxiliary members as well. Auxiliary members will wear no jewelry during performances. Auxiliary hair and make up will be determined and communicated by the auxiliary advisor.

Majorettes: All majorettes must purchase their own batons, costumes, shoes, tights, band t-shirt, and warm-ups. Warm-up pants and jacket may be worn over uniform as directed. Because of the nature of these outfits, Majorette uniforms are purchased by the student.

- **Show Uniform:** Brown/orange long sleeve costume, approved twirling shoe, tights and hair piece.
- **Warm-weather Uniform:** Warm-weather costume, approved twirling shoe, tights, and uniform hair style.
- **Casual Uniform:** Neat blue jeans or black shorts, band t-shirt, white socks, and white tennis shoes (similar to Keds) or white twirling shoes.

Color Guard: All color guard members must purchase their own shoes, tights, band t-shirt, and warm-ups. Show uniforms are loaned to auxiliary corps members and are to be hung in correctly and stored as instructed at school. Replacement Cost of these uniforms is \$173.00.

- **Show Uniform:** Brown velvet tunic and pants outfit, tights, black socks, black uniform shoes and approved hair scrunchy or ribbon.
- **Summer Uniform:** Brown Dresses, brown spankies, tights, black ankle socks, and black uniform shoes.
- **Casual Uniform:** Neat blue jeans or black shorts, band t-shirt, black socks, and black uniform shoes.
- **Silks:** Practice silks and poles are loaned to the flag corps members and may be taken home for practicing. If not returned at the end of the school year, each member will be charged a \$30 replacement fee. Additional practice silks and poles may be purchased from the Advisor for an additional fee. All show silks and poles are

loaned to the flag line members and must remain at school. **ALL flags are to be transported to and from games, etc. in the flag bags.**

Concert Uniforms:

Boys: Consists of the black tuxedo jacket and pants (replacement value \$373), white tuxedo shirt (\$20, with studs), black bow tie, black socks, black belt and black shoes. **Everything but the shirt, belt, socks and shoes are loaned to you.** The required white tuxedo shirts are ordered through the Boosters. These are high-quality shirts with studs and should last a student through all four years of concert season. Students will be fitted for tux shirts in October during school hours.

Girls: Consists of a long black dress (provided, replacement value \$96) and black shoes.

SCHOOL BUS TRANSPORTATION

All members must ride the school buses to and from all football games and other performances at which bus transportation is needed. Only band members, staff, and chaperones are permitted to ride the buses. All Bus rules according to Sylvania Schools will be in effect while traveling. In addition, complete respect of the driver and chaperones will be expected, instruments are not to be played while riding the bus, and uniforms will be worn in their entirety. The Southview band leaves buses cleaner than they were found!

If a parent wishes to have their child ride home with them after a performance, the parent must present a signed note to one of the Directors prior to departure from school and must personally meet with a Director upon leaving with their child. **Please note...**this type of situation is not encouraged.

BAND LEADERSHIP

Student Band Officers have been elected by the members of the band and will represent the band in many capacities. These students are the student club officers for Southview High School Band, work with the directors, serve as liaisons with the Band Boosters, and demonstrate the highest level of commitment to Southview Band. All activities of the club are subject to the rules and regulations of the Student Activity Program as set forth by the Sylvania Board of Education.

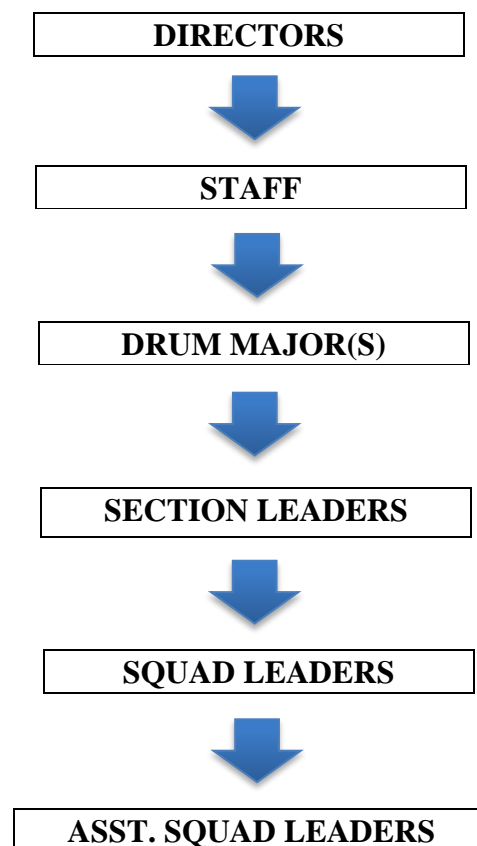
The Student Band Organization raises funds throughout the year to finance its various projects, which include helping to fund social activities for the band members, equipment and supplies for student use at band camp, and donating financial assistance to community and school-sponsored activities.

STUDENT BAND OFFICERS - DUTIES AND RESPONSIBILITIES

Position	Qualifications	Duties
President	Any senior band member	Organize / oversee all band events and activities such as band camp activities and theme days, skit night, fundraisers, penny wars, car wash, etc.

Vice president	Any senior band member	Assist director in organizing/overseeing all band events and activities, especially when band president cannot be present.
Secretary/Treasurer	Any senior band member	Organize Big/Little system across TS & SV Assist in taking attendance and other record keeping needs Arrange any "thank you" cards or other correspondence
Head Librarian	Any sophomore, junior or senior band member	Organize music library Assist students in need of music Copy / Scan parts as necessary
Class Representatives	Any member of the class	Represent band members at all officer meetings Contribute to organizing/overseeing all band events and activities

MARCHING BAND CHAIN OF COMMAND



DRUM MAJOR(S)

Drum majors serve as squad leaders, section leaders, and drill coordinators. They also perform the duties of field commanders and conductors.

Duties:

- + Read and understand all music for the season before having to teach it. Look ahead at the music so you have time to ask questions!
- + Practice and understand conducting patterns/tempo/time to effectively direct the band on the field and in music rehearsals.
- + Be responsible for the students in the band. Please make sure they are prepared with the necessary equipment and knowledge to be successful during rehearsal (instrument, flip folder, music, pencil, tennis shoes, reeds, oils).
- + Keep in contact regarding call time/ready time and hold students accountable for being on time and prepared! Set an example for them with these items.
- + Receive, maintain and bring drill charts to rehearsal. Understand how to read the drill charts, interpret directions, and implement the moves into rehearsal effectively. Prepare before rehearsals to make learning drill faster during rehearsal.
- + Help the students in squads read coordinate to effectively find their location on the field. Mark off from sidelines or hashes to find appropriate drill set.
- + Engage band students in social activities. Make the freshman/new students feel welcome and included. Find optional bonding opportunities to offer students.

SECTION LEADER

Section leaders serve as the music and visual coordinators for the section. They determine what the section needs the most help with and delegates to the Squad and Assistant Squad Leaders.

Duties:

- + Read and understand all music for the season before having to teach it. Look ahead at the music so you have time to ask questions!
- + Run music and marching sectionals during band camp, during class, and outside of class.
- + Delegate to squad leaders and assistant squad leaders' tasks such as pulling struggling students out to work on marching or music.
- + Engage section in social activities. Make the freshman/new students feel welcome and included. Find optional bonding opportunities to offer your section.
- + Be responsible for the students in your section. Please make sure they are prepared with the necessary equipment and knowledge to be successful during rehearsal (instrument, flip folder, music, pencil, tennis shoes, reeds, oils).
- + Keep in contact regarding call time/ready time and hold students accountable for being on time and prepared! Set an example for them with these items.
- + Show students how to write drill breaks in their music, and how to use them during rehearsals. Confirm that all students in your section have drill breaks written in.
- + Assist with music memorization. Schedule additional help sessions for your section, engage students in music memorization techniques, and generally assist with section preparedness for music checks.

SQUAD LEADERS

Squad leaders assist their ranks (or squads) with the interpretation and execution of drill maneuvers and playing performance.

Duties:

- + Be responsible for the students in your squad. Please make sure they are prepared with the necessary equipment to be successful during rehearsal (instrument, flip folder, music, pencil, tennis shoes)
- + Keep in contact regarding call time/ready time and hold students accountable for being on time and prepared! Set an example for them with these items.
- + Receive, maintain and bring coordinate sheets to rehearsal. Understand how to read coordinate sheets, interpret directions, and implement the moves into rehearsal effectively. Prepare before rehearsals to make learning drill faster during rehearsal.
- + Help the students in your squad read coordinate sheets to effectively find their location on the field. Mark off from sidelines or hashes to find appropriate drill set.
- + Show students how to write drill breaks in their music, and how to use them during rehearsals. Confirm that all students in your squad have drill breaks written in.
- + Report attendance at the start of rehearsal.
- + Perform uniform inspections. Report uniform inspection approval and attendance at performances.
- + Remind assistant squad leaders to report to Band Secretary daily if/when students are missing any of the following items: tennis shoes, coordinate sheets, music, lyre, flip folder, instrument. This is for each student's daily grade.

ASSISTANT SQUAD LEADERS

Squad leaders assist their ranks (or squads) with the interpretation and execution of drill maneuvers and playing performance.

Duties:

- + Be responsible for the students in your squad when the squad leader is absent. Please make sure they are prepared with the necessary equipment to be successful during rehearsal (instrument, flip folder, music, pencil, tennis shoes)
- + Keep in contact regarding call time/ready time and hold students accountable for being on time and prepared! Set an example for them with these items.
- + Receive, maintain and bring coordinate sheets to rehearsal. Understand how to read coordinate sheets, interpret directions, and implement the moves into rehearsal effectively. Prepare before rehearsals to make learning drill faster during rehearsal.
- + Help the students in your squad read coordinate sheets to effectively find their location on the field. Mark off from sidelines or hashes to find appropriate drill set.
- + Show students how to write drill breaks in their music, and how to use them during rehearsals. Confirm that all students in your squad have drill breaks written in.

- + Show students how to write drill breaks in their music, and how to use them during rehearsals. Confirm that all students in your squad have drill breaks written in.
- + Report to Band Secretary daily if/when students are missing any of the following items: tennis shoes, charts, music, lyre, flip folder, instrument. This is for each student's daily grade.
- + May be asked to assist other squads without a leader near them on the field.

AWARDS

Throughout the school year, band members are able to earn a number of awards and commendations by their participation in the various band activities.

Marching Season Awards:

- **End of Season Pizza Party:** Held the Monday after the NV/SV game in the band room.
- **Awards of "Fun":** Voted on by the band members and are awarded by the Student Band Officers.
- **Auxiliary Awards:** Given to the members of the Auxiliary for their participation in all of the Auxiliary activities for the year. First year members get a chenille patch. Second-Fourth Year Members get a pin to put on their patch.
- **Marching Band Honor Awards:**

1. Outstanding Squad	5. Most Valuable Player
2. Outstanding Senior Marcher	6. National Color Guard Award
3. Outstanding Freshman Marcher	7. National Marching Band Award
4. Most Improved Marcher	

End of Year Awards: These awards are distributed at either the Spring Band Concert or Pizza Party.

- **Participation Awards:** 9th grade = certificate, 10-12 grade = Band Pin
- **Band Varsity Letter:** Awards to any band member earning a total of five points from the list of Band Letter Requirements. Students wishing to be awarded their band letter must complete the online form. If this form isn't complete, students will not be awarded their band letter.
 - First year band letter award: An official Southview chenille letter with a "Band" insert added
 - Second, Third, and Fourth year awards are note pins (2-note, 3-note, and 4-note) that are to be added to the chenille letter.
 - A separate certificate is given to any band member who earned 10 or more points toward a band letter.
- **Auxiliary Band Letter:** Auxiliary ONLY members can also earn an Auxiliary Corps Band Letter by earning a total of five points from the list of Auxiliary Corps Band Letter Requirements.
- **Achievement Award:** Certificate given to band members for "above and beyond" service and attitude in band.
- **Directors Award:** Recipients are chosen by the Directors for service done throughout the entire year. Qualifications considered for the award include: Outstanding musicianship, Leadership, Good attitude and cooperation, Effort including "spirit and enthusiasm," Service participation in a number of the band performing groups, volunteering for extra duties (office help, fund raisers, after-school rehearsals, playing more than one instrument, etc.), Attendance

- **John Philip Sousa Award:** Given to a senior each spring. The Sousa Award recognizes superior musicianship, leadership, and dedication to the Southview Band program. Our top musician receives this award.
- **Patrick Gilmore Award:** Given to one senior each spring. The Gilmore Award recognizes excellent musicianship, leadership and dedication to the Southview Band program.
- **Boosters Scholarship Award:** A Boosters Scholarship of \$200 is given to a graduating senior. It is not based upon musicianship or daily grades; but on enthusiasm, citizenship and service to the Southview Band. Applications are given to each senior, and a committee of three (3) band parents, who are not Boosters officers and whose students are not seniors, judge the applications anonymously.

Varsity Letter Requirements: 5 points are required to earn band letter

1. Currently taking private lessons on **your** band instrument
(submit Private Instruction form for proof) 1 pt.
2. Marching Band Section, Squad or Assistant Leader 1 pt.
3. Majorette or Color Guard member 1 pt.
4. Concert Season section leader 1 pt.
5. Changed over to another instrument (this year) 1 pt.
6. Additional performance at Solo & Ensemble Contest 1 pt. each
7. Member of Pep Band (all 10 dates) 1 pt.
8. Member of Jazz Band (for credit—all year) 1 pt.
9. Band Officer 1 pt.
10. Member of Musical pit orchestra 1 pt.
11. Band Room set-up crew (at least one semester) 1 pt.
12. 10 Volunteer Hours (working at Band Events, Contest Shifts, optional pep bands) 1 pt.
13. Member of Full Orchestra/Graduation Orchestra 1 pt.
14. Pass out Programs at a Music Department Concert (2 concerts for 1 point) 1 pt.
15. Any additional events that are offered for varsity credit. (point value varies)

Auxiliary ONLY Member Letter Requirements: 5 points are required to earn band letter.

1. Squad Leader 1 pt.
2. Taking private lessons (baton or guard) 1 pt.
3. Extra-shift worker at Band Contest at Southview 1 pt. each
4. 10 Volunteer Hours (working at Band Events, Contest Shifts, optional pep bands) 1 pt.
5. Pass out programs at Music Department Concerts (2 concerts for 1 point) 1 pt.
6. Participation in Winter Guard 1 pt.
7. Any additional events that are offered for varsity credit. (point value varies)

SOUTHVIEW BAND BOOSTERS

The Southview Band Booster Organization is comprised of ALL SVB parents, guardians, and supporters. This organization supports the band program with both volunteer and financial support. Meetings occur at school and the schedule will be available on www.southviewband.com. Parents are encouraged to attend these meetings. All parents are expected to volunteer as much as possible throughout the year, especially when hosting an OMEA event or other event where we are selling concessions. Parents interested in being an executive officer can contact the Band Booster President, Lisa Marsalek, SVBandBoosters@sylvaniaschools.org. You can also learn about SV Band Boosters at www.southviewband.com.

Fundraising

It takes thousands of dollars to keep the Southview Bands running. A large part of this is funded from the Southview Band Boosters. This money is used in the areas of: supplemental instruction, equipment for student use, OMEA entry fees, administrative requirements, and awards.

For performance-based trips, students are able to fundraise for their individual trip costs. These specific fundraisers are only done in preparation for trips and funds will be paid directly to the travel company toward that individual's remaining balance. Any funds raised by an individual above their trip costs, will be put toward a sibling or in the band scholarship fund. Upon graduation or departure from the program, any money left in the student's ledger can be either passed to a younger sibling currently in the high school band program, or it will be placed into the band scholarship fund.

Each student is expected to actively participate in all fundraisers! It takes a lot to facilitate a band program of our size! We need all hands-on deck to create the best experience and education for our students.

Getting Involved

- Attend Band Booster meetings each month.
- Get involved! Volunteer your time for an activity that interests you. This is the best way to get to know the students and the other parents. Your student will be aware of your support, just don't expect them to acknowledge it! The Band Boosters need the involvement of every parent!
- Read the website and e-mails carefully and transfer dates to the family calendars.
- Save newsletters for future reference.
- Encourage your child to work ahead and be prepared by practicing daily, learning music before the deadline, and keeping track of all important dates.
- Encourage, remind, offer assistance where appropriate. Taking responsibility is one of the most difficult, but most valuable, life skills your child will acquire through band membership. Inform your child, ahead of time, of the consequences of potential misjudgments or inappropriate behavior and then let them handle their schedules and their situations.
- Be a good listener. By staying informed about the Band's activities through Band Booster meetings, reading the website, and cheering at half-time shows, you will be able to converse with your child in a meaningful way.
- Keep a positive attitude and lead by example!
- Find things to compliment or praise! Avoid criticizing, particularly the band's performance. If they made a mistake, they know it. Find something you liked about the performance: good sounds, straight lines, coordinated marching, energy, and musicality. Leave the musical critique to the director or

clinicians. If your child is upset about a performance, you might say that you are sure they did their personal best. Answer their complaints with a “Gee, I didn't notice” or “it wasn't obvious from where I was sitting” or “I thought it was terrific”.

- Be prompt and encourage your child to be prompt. It is important to your child’s development of self-discipline. It is important to the entire band program. Quite often, the tardiness of even one student will hold the entire process. To be early is to be on time. To be on time is to be late. To be late is to be left.

Fees

All fees should be paid by the date on individual fee invoices. If a student has outstanding fees, grade sheets will be held by the school office until payment is made. In the event a check used to pay for fees is returned to the Boosters Association for any reason, the maker of the check will be responsible for paying any bank fee incurred by the Boosters due to that returned item. Payment must then be received in the form of cash or money order.

Sign up to help: [Southview Band Sign Up Genius](#)

SV Band Handbook & Parent Page

Print, sign, and return ONLY this page!

<p>Parent Information: Parent/Guardian 1: Do you live with this parent? Y N</p> <p>Relationship to student: _____</p> <p>Guardian Name: _____</p> <p>I can help during school hours? Y N</p> <p>Additional Comments:</p>	<p>Parent Information: Parent/Guardian 2: Do you live with this parent? Y N</p> <p>Relationship to student: _____</p> <p>Guardian Name: _____</p> <p>I can help during school hours? Y N</p> <p>Additional Comments:</p>
---	---

Volunteer Interests We want to get an idea of where you're best able to help out. Specific Dates will be posted on the Booster Volunteer Website. Please select 3 things you're interested in/able to help out with, that way we can all donate our best time and efforts.

- Minimum of 1 shift of work at the contest we host in March 2021
- Donate a minimum of \$30.00 towards supply items for the contest concessions and band events. It is more cost effective for us to buy in bulk and it also eliminates finding a place to store the items that people donate. Please send your money in an envelope to the band office with this form. (Checks made to Southview Band Boosters)
- Pick up and prepare food for the concession stand
- Work at the Concession Stand (We run the stand at all Varsity Home Football Games & Band Booster Hosted Events)
- Help with and organize alumni / donation mailing projects.
- Assist with Band Uniform fittings, alterations (no sewing skills needed, lessons provided), uniform part washing
- Participating on a committee for the band boosters (Ex. Finance, Events, Fundraising Projects, Website, Outreach, etc.)
- Light construction, if we need to build something for the band / band room.
- Interested in researching and applying for grants for the band programs.
- Volunteer to be a Bus Chaperone for trips. (Limited number)
- Donate 1 case of water (drop off at the band room anytime!)
- Tag Day Driver
- I am a medical professional and am willing to help out as the "Band Doc" at Marching Events (camp, games, parades)
- Cougar Head Sales~ available to sell Cougar Head Decals at events
- Other _____

I have read and understand the Southview Band course information found in the 2020-2021 Southview Band Handbook including the attendance policies and procedures as well as the grading rubric and standards.

Student Signature: _____ Date: _____

Parent Signature: _____ Date: _____